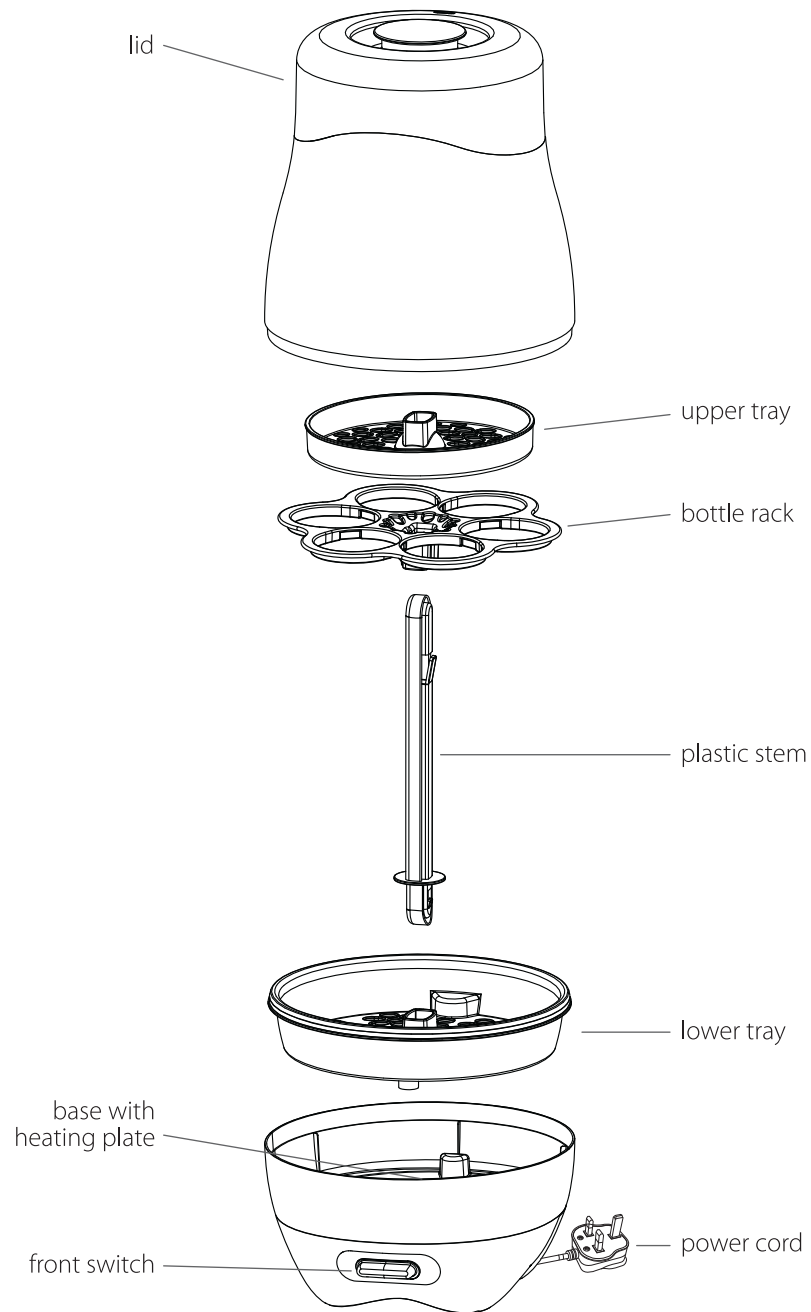




EXPRESS STERILIZER INSTRUCTION MANUAL

- ♥ Easy to use
- ♥ Express sterilization cycle
- ♥ Exposed heating plate coated with protective layer for easy cleaning
- ♥ Uses steam to kill bacteria and other household germs
- ♥ Auto cut-off when sterilization cycle completes
- ♥ Holds up to 6 bottles of standard shape
- ♥ Inner tray can be dismantled for easy washing
- ♥ Can sterilize other baby accessories



*Measuring cup and tongs are not included.

WARNING

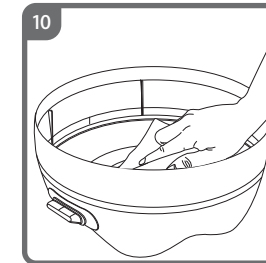
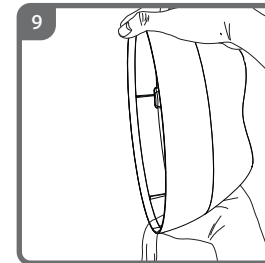
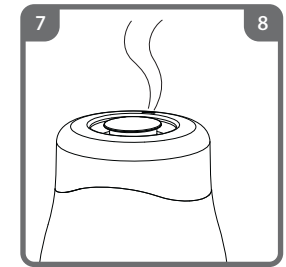
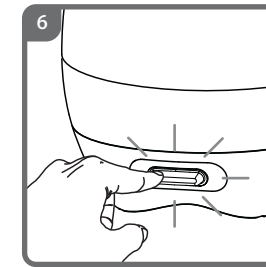
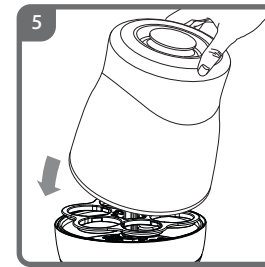
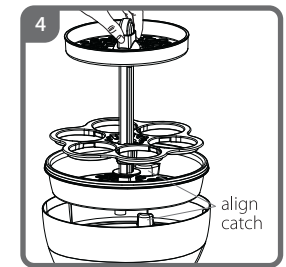
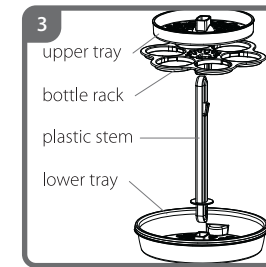
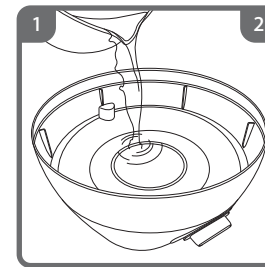
1. Ensure that the power supply voltage marked on the sterilizer corresponds with your power supply.
2. Sterilizer is designed for household use to sterilize baby bottles and accessories only.
3. Ensure sterilizer is placed on a firm level surface and minimise movements during operation.
4. Sterilizer becomes very hot and the steam can cause severe scalding during operation. Do not touch the hot surfaces during operation or go near the steam outlet on top of lid.
5. Never open the lid during or immediately after operation. Please wait for at least 3 minutes for unit to cool down.
6. Move or clean the sterilizer when unit has cooled down.
7. To stop the sterilizer during the operating cycle, switch off the power supply.
8. Do not place sterilizer on or near hot surface.
9. Keep out of reach of children.
10. Unplug the power cord when not in use.
11. Never place items on top of the sterilizer.

Using the sterilizer unit for the FIRST TIME

(Refer to Diagram A):

1. Remove the tray set from the sterilizer and wash with mildly formulated Tollyjoy's Baby Accessories and Vegetable Liquid Cleanser before sterilization.
2. Pour in 90ml of water onto the heating plate (distilled water is recommended in order to maintain the heating plate in good condition).
3. Assemble the stem, bottle rack and trays as shown in diagram.
4. Align the assembled tray set onto the catch of the base.
5. Close the lid.
6. Plug the power cord to the power supply and switch it on. For first time usage, unit may light up and start sterilization automatically without pressing down the switch on the base. This is not a fault, so please leave the unit to complete its first cycle.
7. Sterilization cycle should complete in 10 minutes. Unit will automatically cut off at the end of the cycle. Lights will go off.
8. Switch off the power supply and wait for at least 3 minutes for unit to cool down before you lift up the lid.
9. Allow unit to cool for 30 minutes before next cycle. Pour away excess water and wipe dry unit.
10. The sterilizer is now ready for use.

Diagram A



Usage Instructions

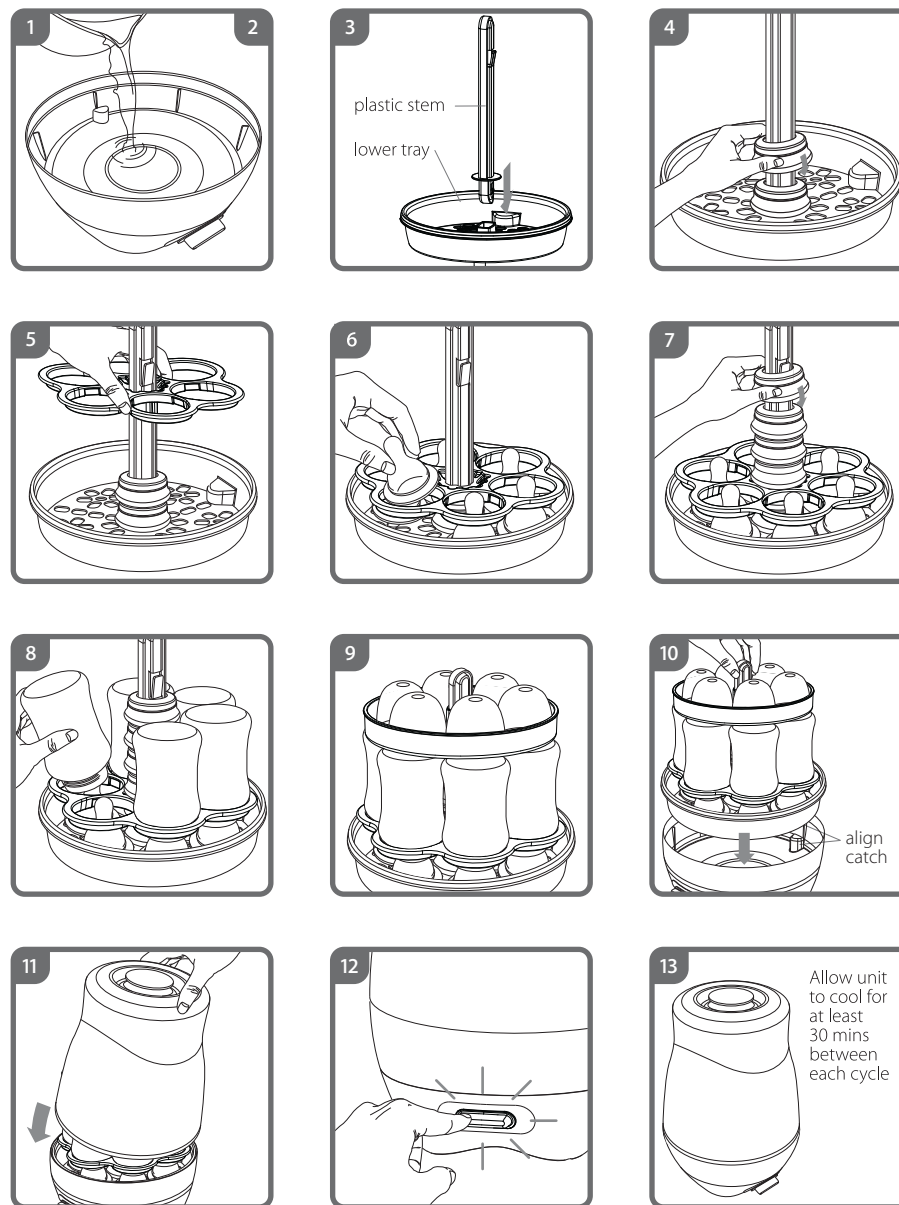
(Refer to Diagram B):

1. Use mildly formulated Tollyjoy's Baby Accessories and Vegetable Liquid Cleanser to wash bottles and accessories thoroughly before sterilization.
2. Pour in 90ml of water onto the heating plate (distilled water is recommended in order to maintain the heating plate in good condition).

Note:

- If lesser amount of water is used, the items may not be properly sterilized.
 - If excess water is added, it will prolong the sterilization cycle time.
3. Slide in the lower tray from bottom of the stem.
 4. Thread 2 screw rings into the stem. This is applicable to wide neck bottle rings only. For normal size rings, place them on the upper tray.
 5. Slide in the bottle rack down into stem until it rests on the top screw ring.
 6. Place the feeding nipples through the center of the holes of the bottle rack above the lower tray. This is applicable to wide neck nipples only. For normal size nipples, place them on the upper tray.
 7. Thread 4 screw rings into the stem. This is for wide neck bottle rings only. For normal size rings, place them on the upper tray.
 8. Place bottles upside down into the bottle rack
 9. Push the upper tray into the stem until it rests on the catch. Place other accessories such as covers and rings onto the upper tray. Ensure items are positioned within the trays/rack for better steam circulation.
 10. Align the assembled tray set onto the catch of the base.
 11. Close the lid.
 12. Plug the power cord to the power supply, switch it on. Press down the switch on the base. After each cycle the unit will cut off automatically and the light will go off.
 13. Allow unit to cool for at least 30 minutes between each cycle.

Diagram B



Taking sterilized items out:

1. Switch off power supply and unplug the power cord. Allow unit to cool for at least 3 minutes before opening the lid.



2. Wash your hand thoroughly before removing the sterilized items.
3. Use tongs to remove the accessories from the trays.
4. To gain access to the bottles, remove the upper tray first. If necessary, shake off excess water from the items before assembling.
5. Pour away excess water and wipe unit dry.

Care for your sterilizer:

1. Using distilled water for sterilization is recommended to minimize the build up of mineral deposit on the heating plate.
2. Ensure sterilizer is unplugged and cooled down before cleaning.
3. Wipe the heating plate each time after use.
4. Do not immerse unit in water or any other liquid for cleaning.
5. Although the heating plate is coated with a protective layer, repeated sterilization cycles can still cause minerals in our water supply to deposit. It is important to de-scale the unit regularly, preferably every week, to ensure maximum sterilization efficiency.
6. To remove the deposits, pour 90ml of household white vinegar on heating plate and leave on for 45 minutes. Pour away the solution, rinse thoroughly with water and wipe dry with a clean cloth.

Important:

1. Do not use bleach or chemical sterilization solutions/tablets in the sterilizer.
 2. Do not use abrasive scouring pad to clean the sterilizer.
-

Troubleshooting Guide

Symptom	Solution
Sterilizer does not work	Check that the power cord is properly plugged into the power supply.
Excessive steam escaping from under the lid	Parts are not assembled correctly. Refer to page 5 and 6.
Sterilizing cycle takes too long	Too much water is used for sterilization. Please ensure 90ml is used.

Terms of Warranty

Section A

The following conditions are specially excluded from the terms of this warranty:

- Damaged caused by misuse or improper handling of product.
- Normal wear and tear.
- Use of incorrect electrical supply or voltage.
- Usage not accordance to instruction manual.

This product is warrant by **Tollyjoy** against mechanical and/or electrical defects for 12 months from the date of purchase. There will be charges imposed for inspection and repair of unit that are out-of-warranty or without proof of purchase and/ or warranty below.

Section B

Please complete section C within 14 days from date of purchase and post to Tollyjoy Baby Products Pte Ltd (Singapore). For customers residing in other countries, please contact your local distributor. Please retain this copy with the original proof of purchase.

Owner's Name (Mr/ Mrs/ Mdm/ Ms):	
Address:	
Telephone (Home):	(Mobile):
Email:	Date of Purchase:

Section C

Please mail this copy, together with photocopy of the proof of purchase to Tollyjoy Baby Products Pte Ltd (Singapore) within 14 days from date of purchase.

Owner's Name (Mr/ Mrs/ Mdm/ Ms):	
Address:	
Telephone (Home):	(Mobile):
Email:	Date of Purchase:

For Singapore customers, please mail to:

Tollyjoy Baby Products Pte Ltd
29 Changi South Street 1,
Changi South Industrial Estate,
Singapore 486771

